

#cci\_mixités

*La mesure des mixités sociales à l'école :  
une problématique statistique mais aussi  
politique et éthique*

The measurement of social diversity at  
school: a statistical as well as political and  
ethical issue in Sweden

**Eva Andersson**

4 & 5 juin 2015



cnesco  
conseil national  
d'évaluation  
du système scolaire

Conseil supérieur  
de l'éducation

Québec



## Background Sweden

- 1992, liberalization of Swedish school system
  - Free school choice
  - Independent schools
- Goal and result-governed school system
- Before 1992 there were school catchment areas
- Student voucher (money) from local municipality.
- Equal education for all students a goal



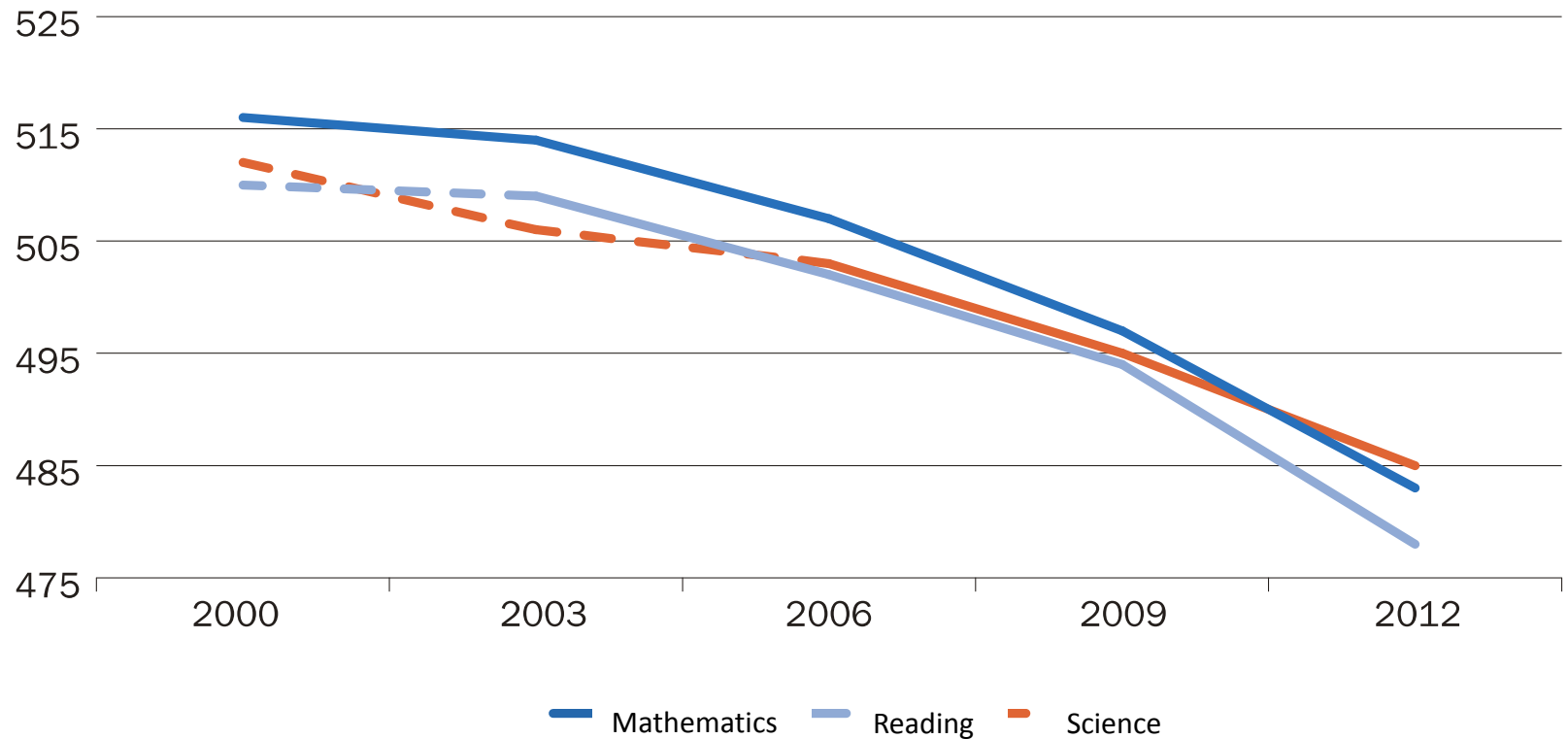
# Recent debates

1. OECD report; how to improve schools in Sweden
  - Falling results in PISA
2. Association between segregation and educational achievements
  - Contested in politics
3. How to integrate newly arrived students
  - How to learn language in segregated system



# Decreasing performance

Swedish results in PISA, years 2000 to 2012





# Is there an association?

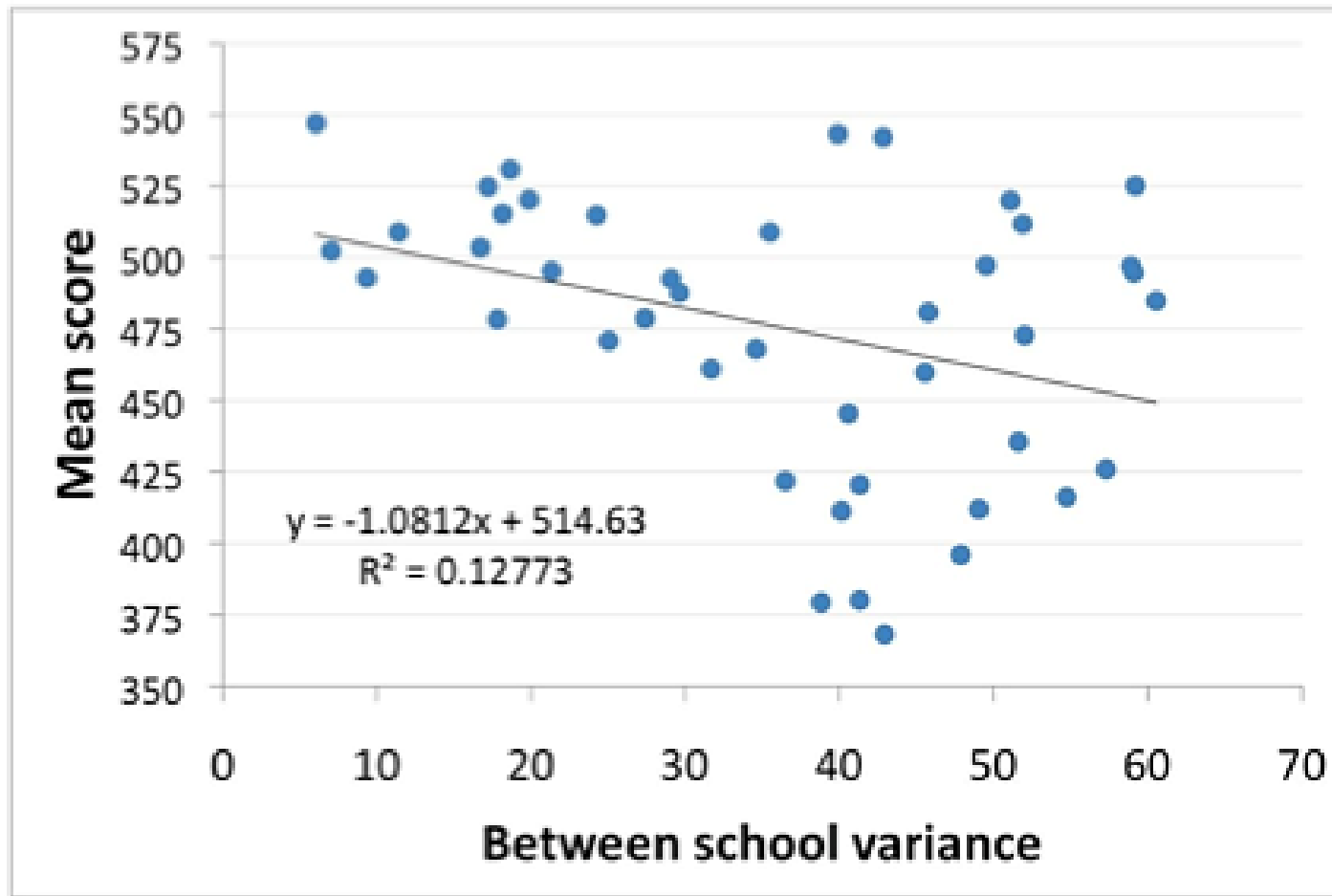
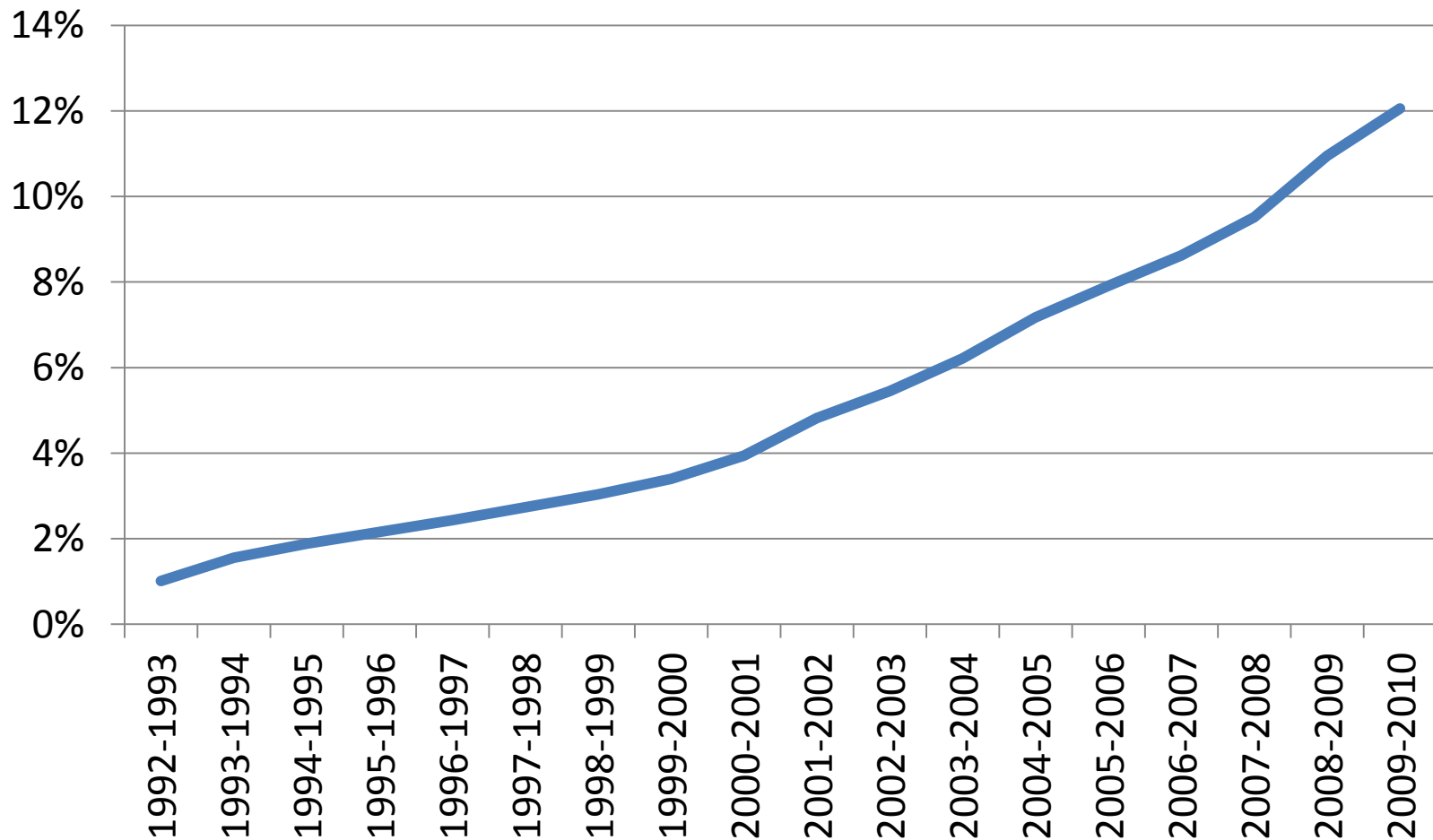


Figure 1 Between school variance and mean student performance in OECD/Pisa data, 43 countries 2000-06. Robust standard error for the slope parameter is 0.358 (Huber-White).



# Increasing school choice in Sweden

Share of students in private schools (9th grade) 1992-2009





# School statistics in Sweden

- The National Agency for Education responsible, but **Statistic Sweden** produces, collects data
- Municipalities (290) deliver data on students and schools to Statistics Sweden
- Statistics Sweden produce individual, longitudinal register data with school data (grades, schools, parents, foreign born, national tests, teachers, costs per school etc.)
- SCB adds students' background from the total population register (RTB)
- All students, not a sample
- No data on religion or ethnicity

## > cont. School statistics in Sweden

- ❑ **National Agency for Education** gets data from Statistics Sweden and produces SALSA (model), SIRIS, and 'Jämförelsetal'.
- ❑ SALSA, model on background statistics of students to compare effectiveness and achievements with the control of e.g. parental education
- ❑ SIRIS, school data base, national tests
- ❑ Jämförelsetal, comparing municipalities
- ❑ Surveys like PISA, TIMSS



## > cont. School statistics in Sweden

- ❑ **Municipalities** (local level) use data to compensate schools financially. Recently arrived immigrants or to schools in which students have low educated parents. Vary between municipalities.
- ❑ Municipalities also use products from the National Agency for Education such as SALSA.
- ❑ In SALSA the indicators used are foreign background, sex, and parental education.



## cont. School statistics in Sweden

- Data for schools, grades and students etc. are in long **time series** back to 1980s. National tests comparable country-wide, from the 2000s
- National Agency for Education arrange seminars with researchers
- Some **researchers directly access registers** at SCB including school data and information on students' parents and schools' and residences' geo-coordinates.
-



# Ethnic diversity

- We cannot analyze ethnicity in its true sense, no data on ethnicity, language or religion for example
- Most studies combine *being foreign* born (or having parents being foreign born) with *social* segregation

# > Political and ethical issues

- *Choice for all?*
  - Measurement of *who* chooses
- *Allocating money to adjust inequalities between schools within municipalities*
  - What indicators to measure?
  - How large is the segregation?
- *Benefits from reforms of free choice, independent schools*
  - Integrating students/mixing?
  - Overall results?
- *School choice based on share of foreign born in school*
  - Information available to parents

***Data is available but political, ethical and ideological questions remain***